

If we made Mat Man with a **triangle**

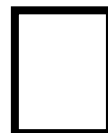


What would Mat Man do?

He'd hold the triangle in his hand
Then ding-ding-ding in a marching band.



If we made Mat Man with a **blue rectangle**



What would Mat Man do?

He'd say, "That's my mat!"



My mat's bright blue!
Shapes are fun to do with you."

With this hard hat



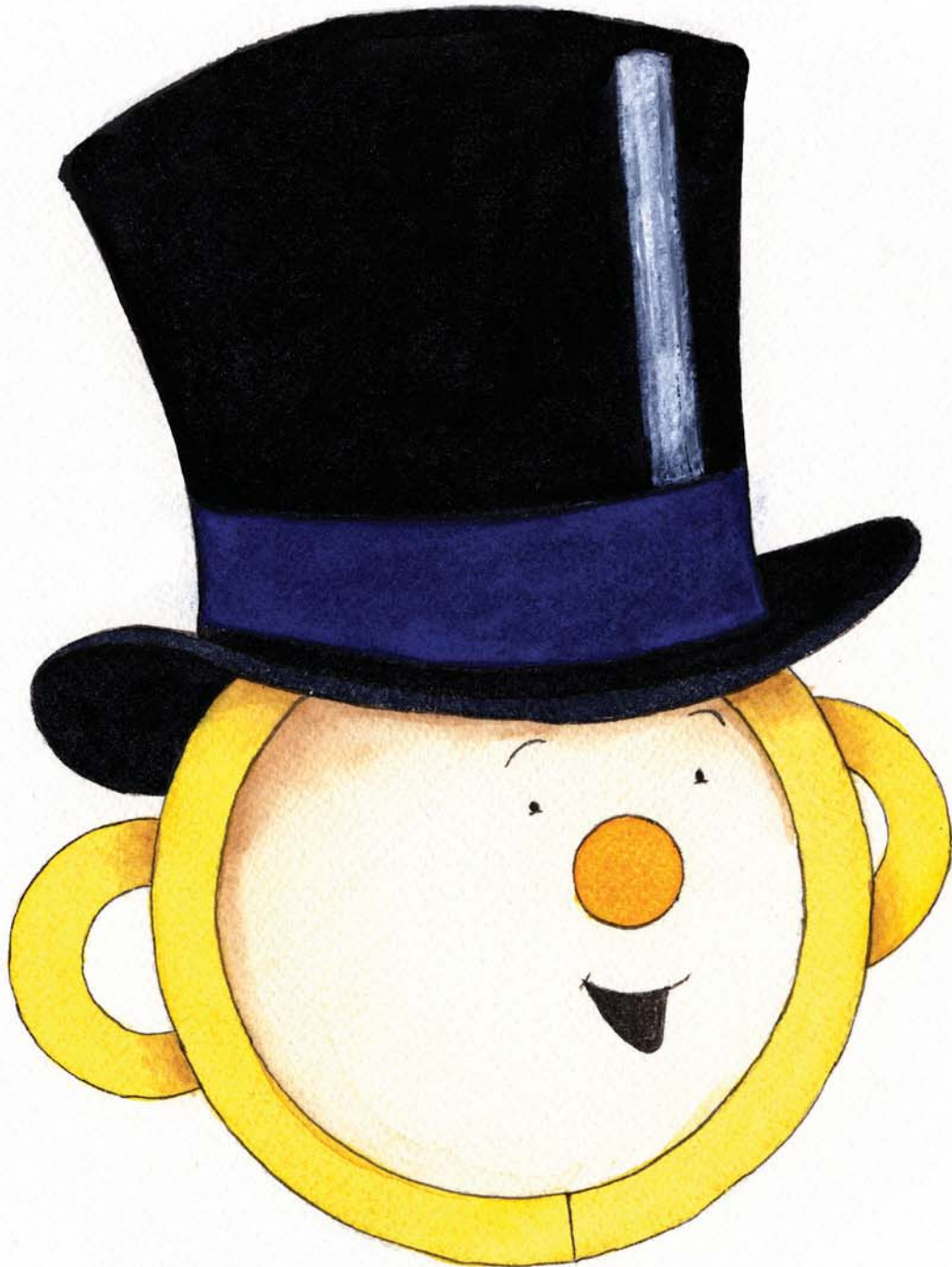
Mat Man is a builder.

I built this treehouse.
I'm very strong.



I saw and hammer all day long.

With this top hat



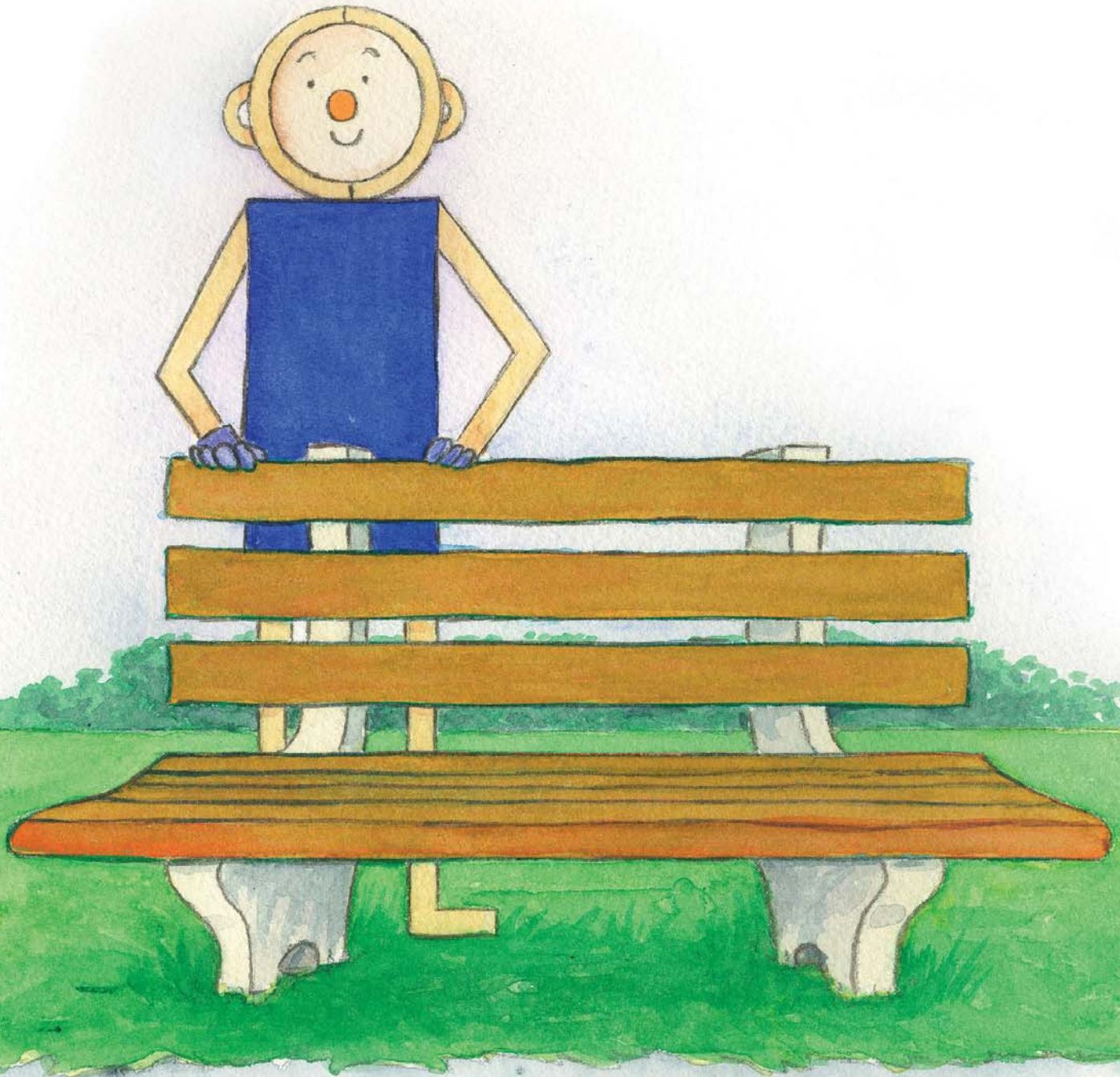
Mat Man is a magician.

Abracadabra, zippity zoo!



Here's a bunny just for you.

Mat Man stands.



stand



Mat Man sits.
Let's say opposites.



sit

He says real.



real

You say pretend.



pretend



It has no wheels, but watch it go!
It zooms so fast across the snow.